

All sizes are approximate and subject to variation



soup bowl
30 x 10 cm



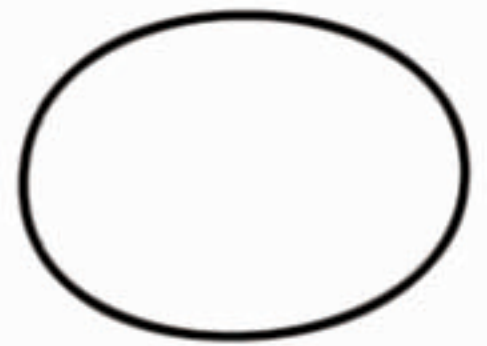
salad bowl
40 x 10 cm



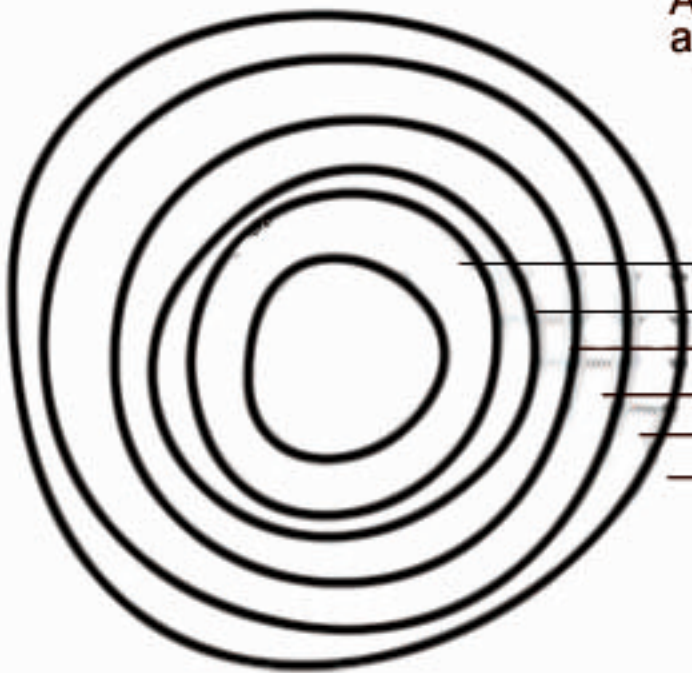
big bowl
48 x 12 cm



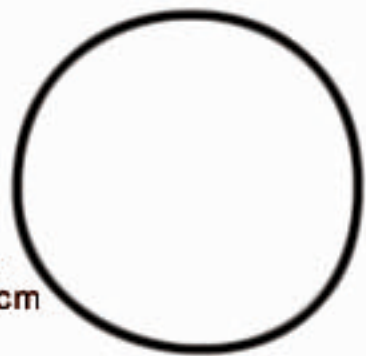
oil burner
16.5 x 12.5 cm



veggie oval
35 x 28 cm



dip dish 15cm
side plate 24cm
dinner plate 28 cm
service platter 36 cm
medium platter 45cm
large platter 52 cm



veggie round
36cm



rectango small 40 x 15 cm
large 55 x 20cm



river 50 x 13 cm



small canoe 30 x 10 cm
medium canoe 46 x 15 cm
large canoe 55 x 20 cm



jug & cup

ed
m
on
ds
©